

Cannabis Retail Development Permit

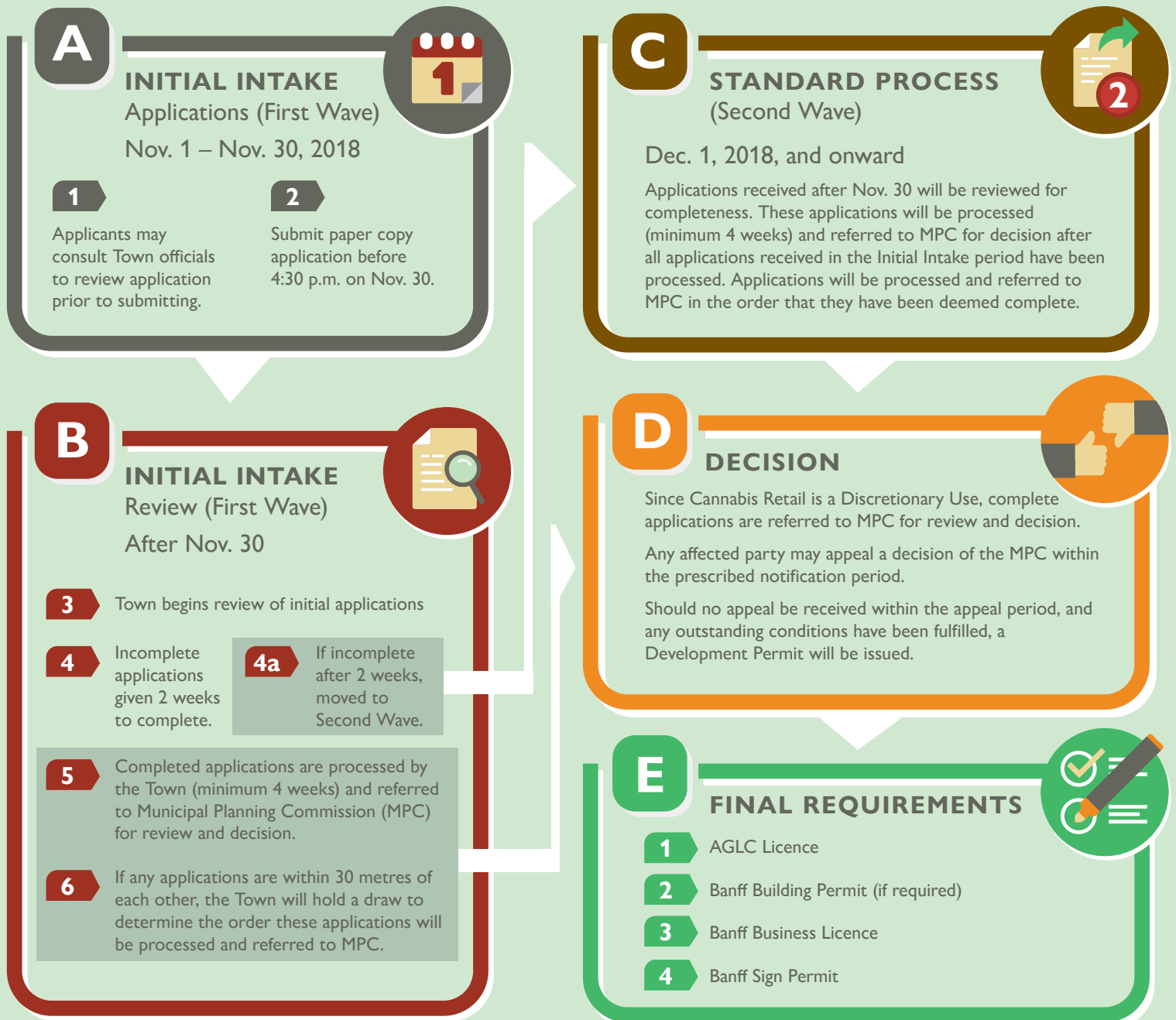


Cannabis Retail: Interested retailers must be aware:

- retail stores must be 100 metres away from a health facility, school, daycare or playground,
- retail stores must be 30 metres apart from each other, and
- retail stores cannot have a window or windows facing onto a sidewalk or lane

A **Development Permit** is the first step required for a storefront cannabis retail operation.

Banff's application process:



Please consult Town of Banff Land Use Bylaw for legislative requirements.