

Traffic Management



ADDRESSING CONGESTION LONG TERM

Key findings from 2015 actions:

- The road system is at capacity when vehicle volume exceeds approx. 24,000 vpd*
- Exceeded 24,000 vpd* 29 days in 2015, up from 15 days in 2014 and 9 in 2013
- Entrance counts up 6% in July and August from 2015 to 1.5 million vpd*
- Short-term actions become less effective past 24,000 vpd*
- Projected growth in visitation & Calgary population required long-term solutions

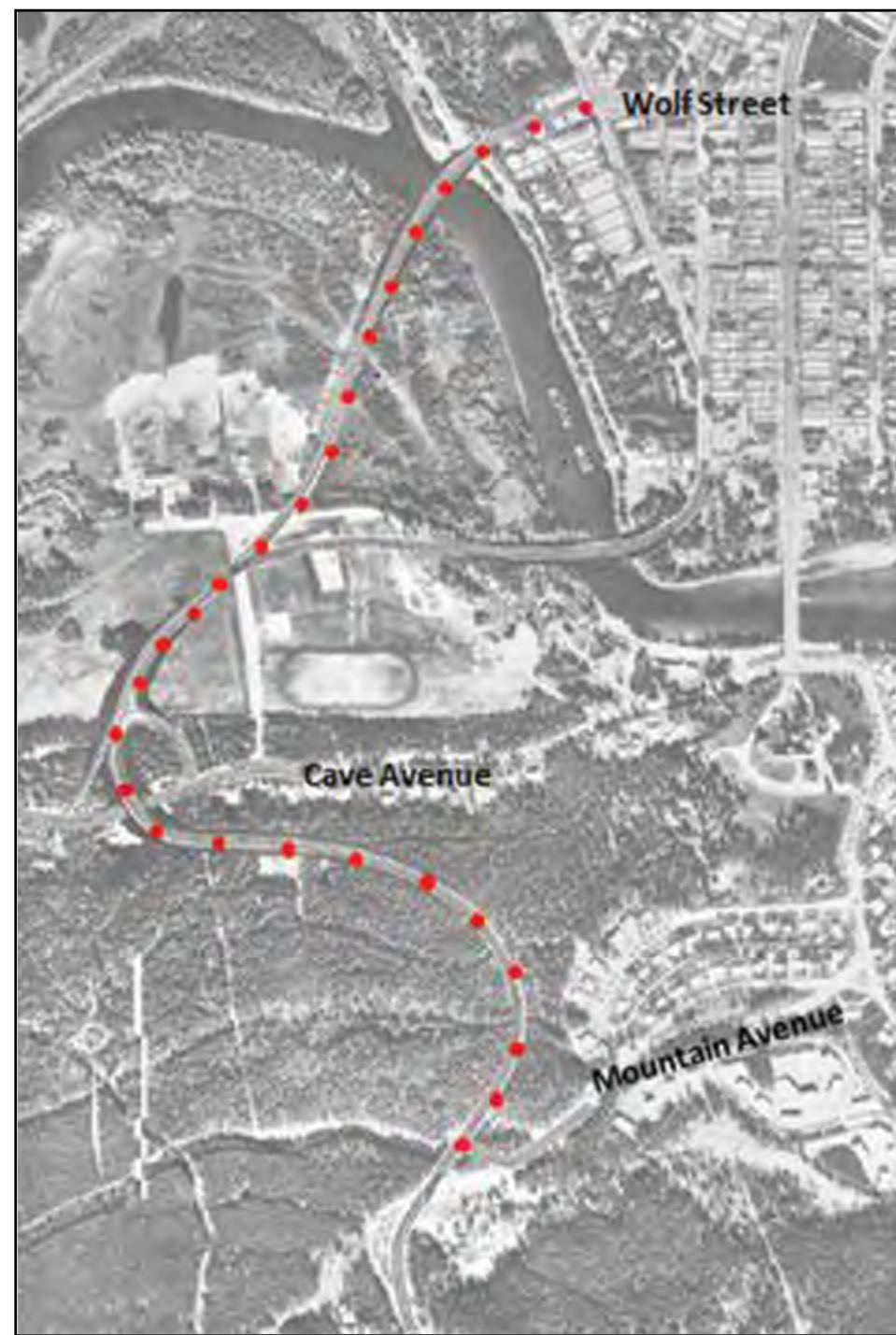
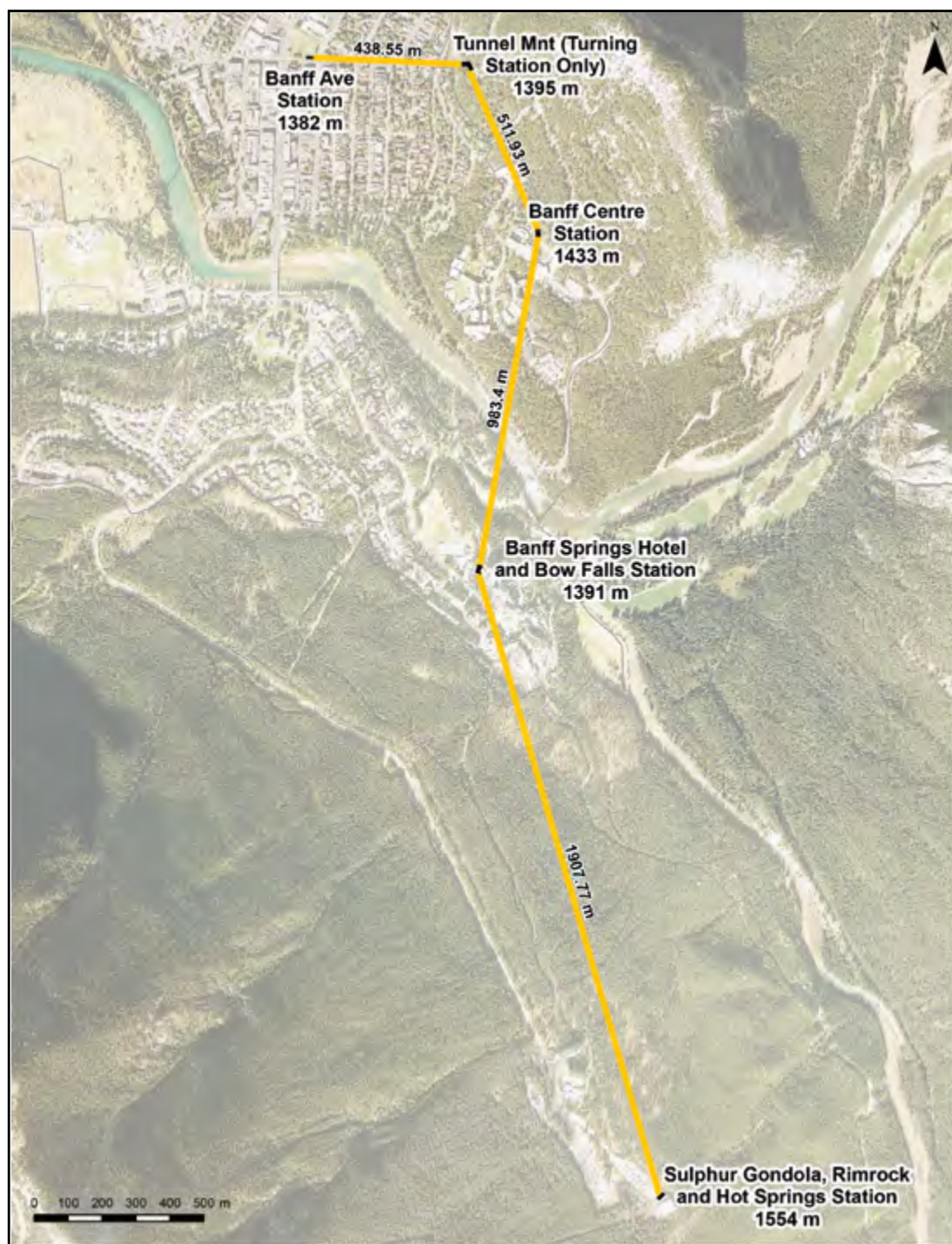
*vpd—vehicles per day, both entrances, both directions – used to indicate volume

Goal • To plan transportation needs to accommodate increased visitation

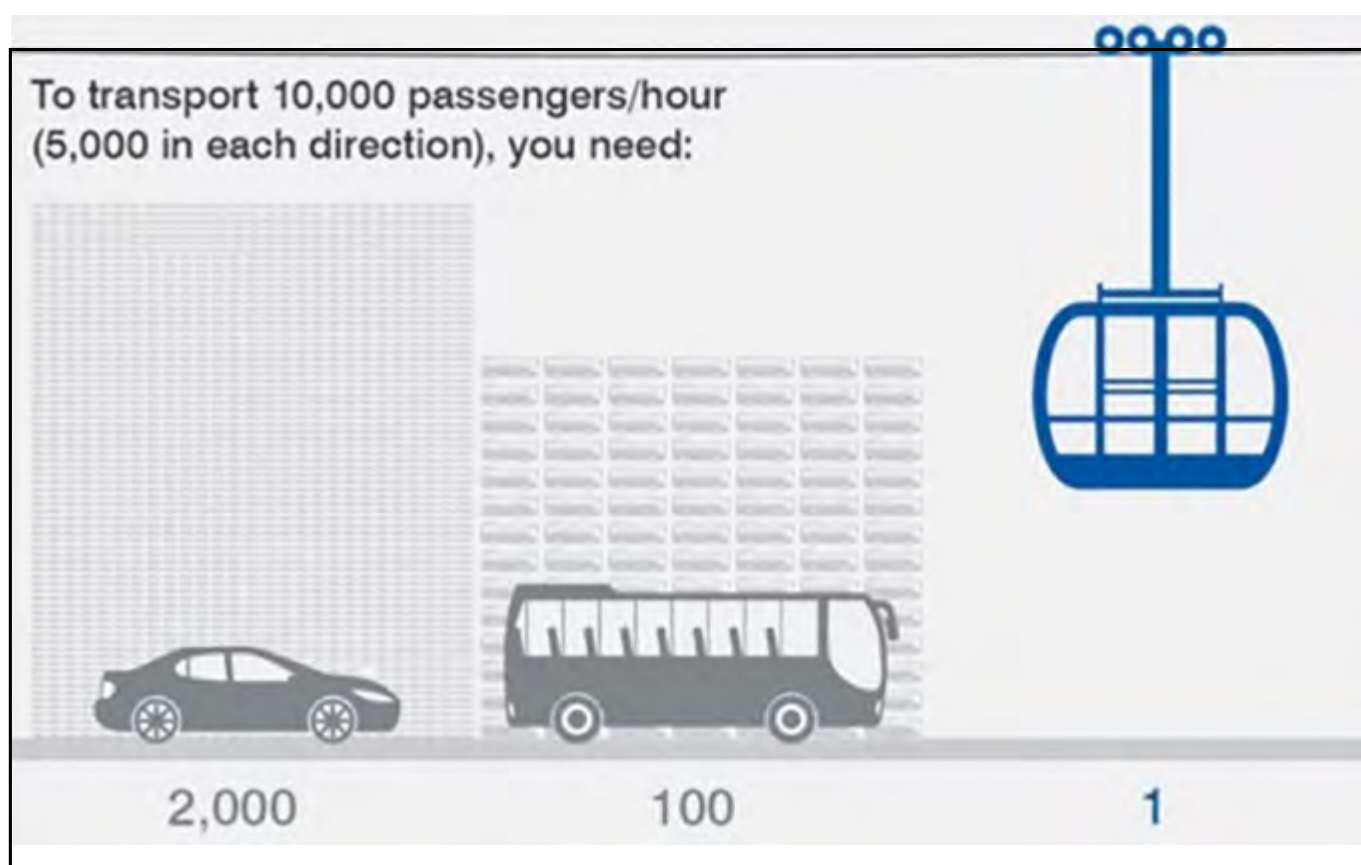
2016 Initiatives

Study the options of:

Move more vehicles: new road infrastructure and/or widen existing roads, etc.



Move people with: intercept lots and increased bus transit, gondola transit, etc.



Assess each option:

- Environmental footprint
- Greenhouse gas emissions
- P3 (public-private partnership) opportunities
- Capital cost
- Operating cost
- Capacity and scalability

visit banff.ca/transportationplan

